

Characteristics / Ordering Code

Pilot operated check valves series ZRE are designed for maximum flow rates and long life time.

The valves are typically used in combination with spool type directional control valves to ensure nearly leak free positioning of the actuator.

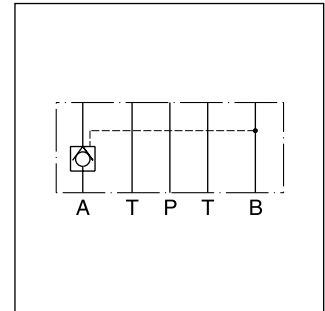
The inlet flow is free while the outlet flow is blocked. Pressure in the inlet line opens the check valve and allows free outlet flow.

Features

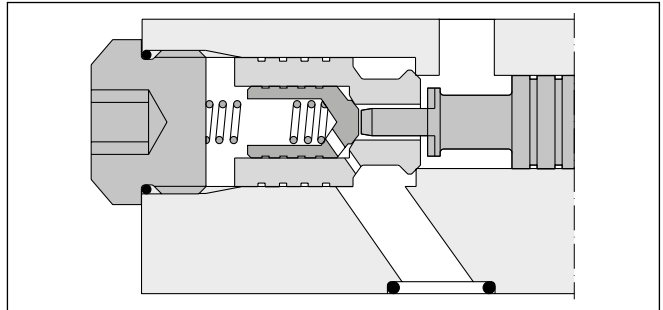
- High flow capacity
- High life time
- Check function in A, B or A + B
- ZRE01 - NG06 (CETOP 03)
- ZRE02 - NG10 (CETOP 05)



ZRE-B01



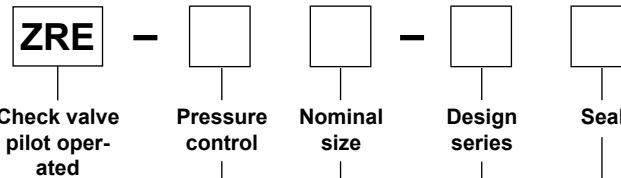
ZRE-A02



ZRE-A02

Ordering code

7



| Code | Pressure control |
|------|--------------------|
| A | Blocked in A |
| B | Blocked in B |
| AB | Blocked in A and B |

| Code | Nominal size |
|------|--------------|
| 01 | NG06 |
| 02 | NG10 |

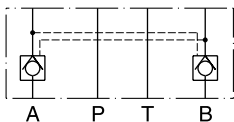
| Code | Seal |
|------|------|
| 1 | NBR |
| 5 | FPM |

| Code | Design series |
|------|---------------|
| D | NG06 |
| E | NG10 |

Ordering code details

ZRE*01

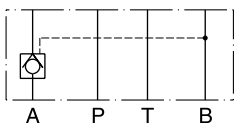
blocked in A and B



Series ZRE-AB01-D1

Order No. 098-91020-0

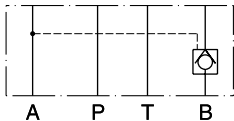
blocked in A



Series ZRE-A01-D1

Order No. 098-91018-0

blocked in B

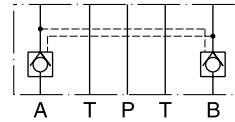


Series ZRE-B01-D1

Order No. 098-91019-0

ZRE*02

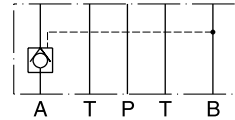
blocked in A and B



Series ZRE-AB02-E1

Order No. 098-91300-0

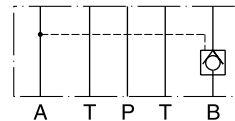
blocked in A



Series ZRE-A02-E1

Order No. 098-91298-0

blocked in B



Series ZRE-B02-E1

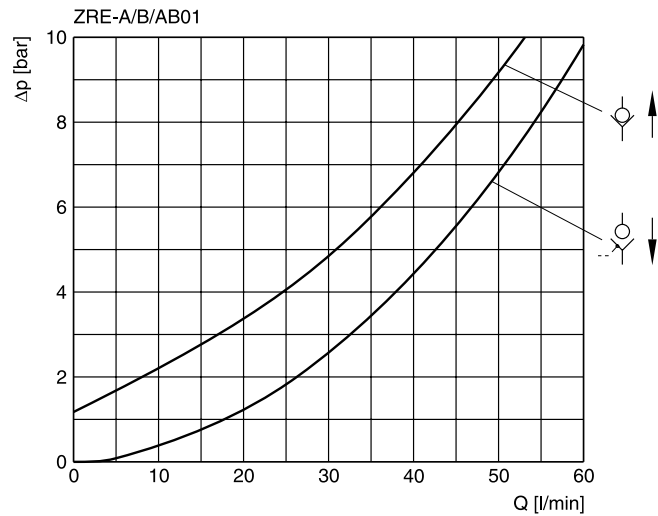
Order No. 098-91304-0

Technical data

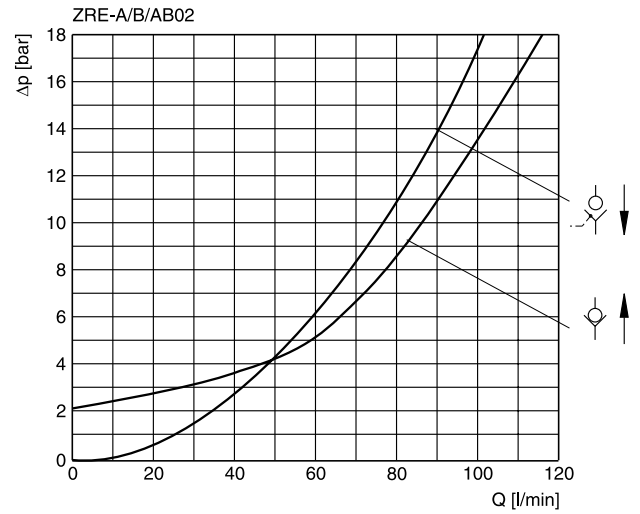
| General | | NG06 | NG10 |
|--|--|--------------------------------------|---------------------------------------|
| Size | | | |
| Mounting interface | | DIN 24340 A6 ISO 4401 NFPA D03 | DIN 24340 A10 ISO 4401 NFPA D05 |
| | | CETOP RP 121 | |
| Mounting position | | unrestricted | |
| Ambient temperature | [°C] | -20...+60 | |
| MTTF _D value | [years] | 150 | |
| Weight | [kg] | 1.2 | 3.1 |
| Hydraulic | | | |
| Max. operating pressure | [bar] | up to 350 | 315 |
| Nominal flow | [l/min] | 60 | 120 |
| Opening ratio (pilot cone / main cone) | | 1:6 | 1:6 |
| Opening pressure | [bar] | 1.2 | 2.0 |
| Leakage | | on request | |
| Fluid | | Hydraulic oil according to DIN 51524 | |
| Fluid temperature | [°C] | -20...+70 (NBR: -25...+70) | |
| Viscosity | permitted [cSt] / [mm ² /s] | 20 ... 400 | |
| | recommended [cSt] / [mm ² /s] | 30 ... 80 | |
| Filtration | | ISO 4406 (1999); 18/16/13 | |

p/Q performance curves

ZRE*01



ZRE*02

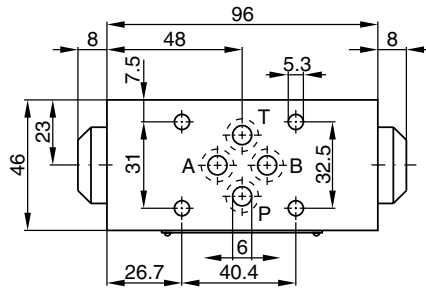


All characteristic curves measured with HLP46 at 50 °C.

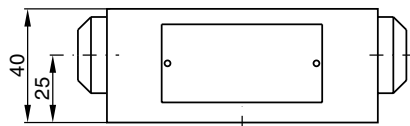
Dimensions

Dimensions

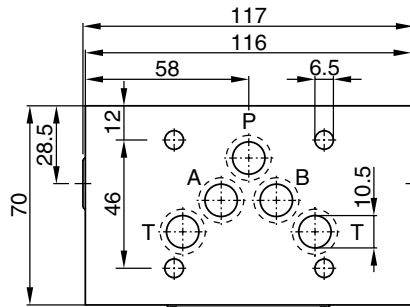
ZRE*01



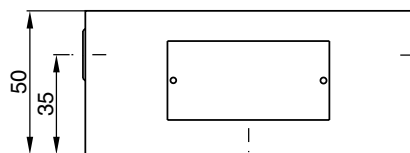
| Seal kit | |
|----------|-------------|
| Seal | Order code |
| 1 | 098-91088-0 |
| 5 | 098-91089-0 |



ZRE*02



| Seal kit | |
|----------|-------------|
| Seal | Order code |
| 1 | 098-91090-0 |
| 5 | 098-91091-0 |



7

